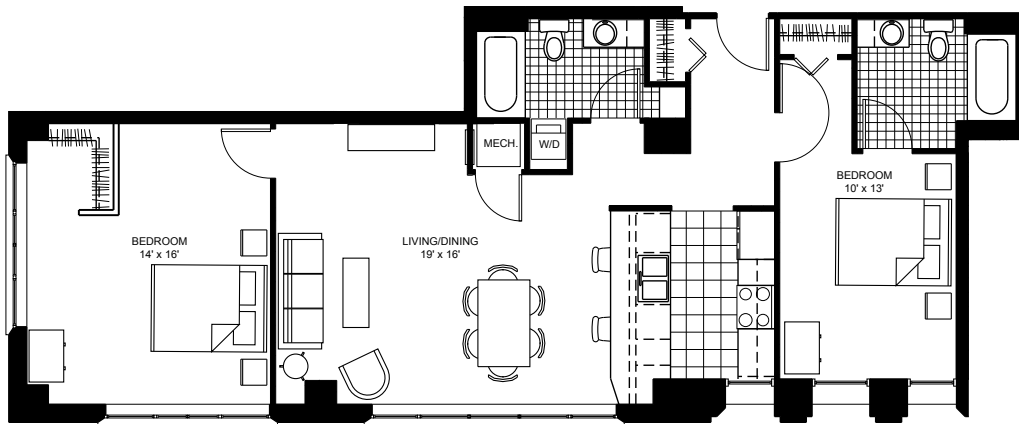


APT 206

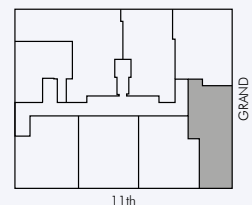
2 BEDROOMS 2 BATHS
1,032 SF



\$ _____ RENT	\$ _____ DEPOSIT	\$ _____ APP FEE	\$ _____ MOVE-IN TOTAL
\$ _____ RENT	\$ _____ PET RENT	\$ _____ WATER/SEWER TRASH/HEAT	\$ _____ MONTHLY EXPENSES*

LEGEND + KEY

- Full Height Wall
- Partial Height Wall
- Carpet
- Vinyl
- Wood



*Residents are responsible for electric utilities in addition to the monthly expenses outlined herein.

Student and income restrictions may apply.

Square footage is calculated using the ANSI/BOMA Z65.4-2010 net method standard for home measurement. All plans, pricing, and specifications are subject to revisions deemed advisable by builder or architect, or required by law.

QUESTIONS? pblofts.com (816) 283-8700

