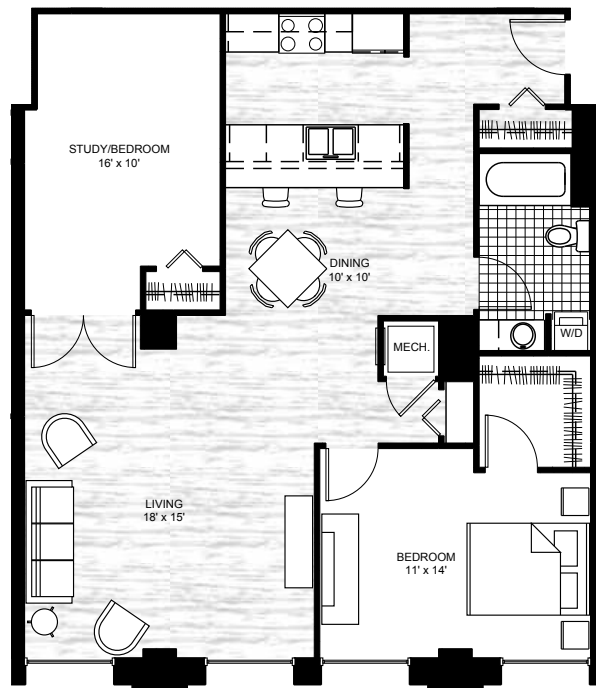


# APT 1507

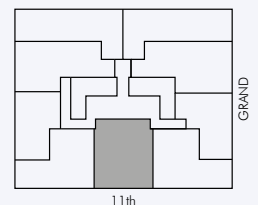
1 BEDROOM 1 BATH  
+ STUDY  
1,073 SF



\$ _____ RENT	\$ _____ DEPOSIT	\$ _____ APP FEE	\$ _____ MOVE-IN TOTAL
\$ _____ RENT	\$ _____ PET RENT	\$ _____ WATER/SEWER TRASH/HEAT	\$ _____ MONTHLY EXPENSES*

### LEGEND + KEY

- Full Height Wall
- Partial Height Wall
- Carpet
- Vinyl
- Wood



\*Residents are responsible for electric utilities in addition to the monthly expenses outlined herein.  
Student and income restrictions may apply.

Square footage is calculated using the ANSI/BOMA Z65.4-2010 net method standard for home measurement. All plans, pricing, and specifications are subject to revisions deemed advisable by builder or architect, or required by law.

**QUESTIONS?** [pblofts.com](http://pblofts.com) (816) 283-8700

